



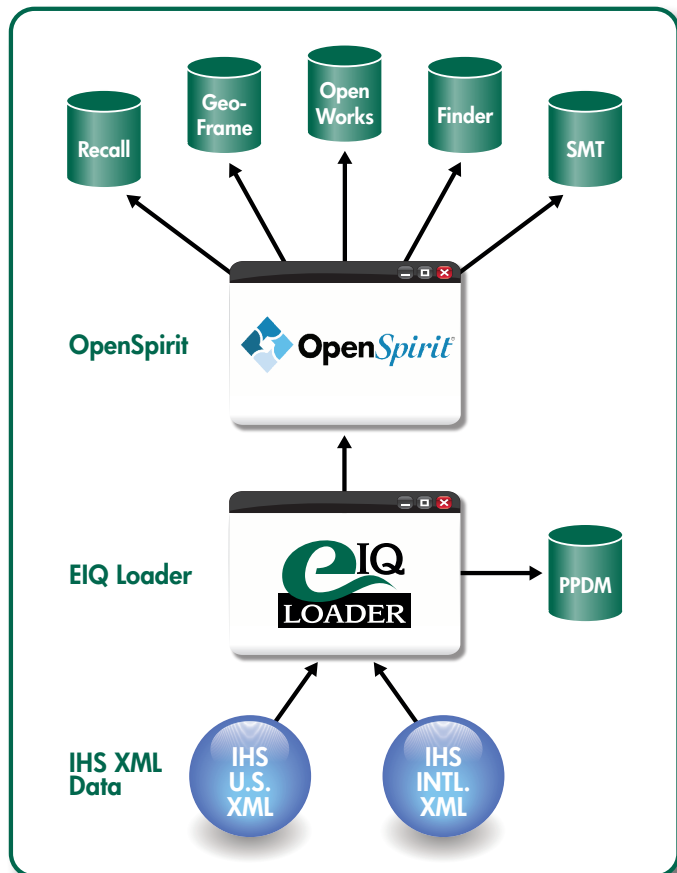
# Load IHS global E&P data quickly and reliably using EIQ Loader with OpenSpirit.

EnergyIQ, OpenSpirit, and IHS have collaborated to develop an application to load data from the IHS Web Services global XML feeds into data stores supported by the OpenSpirit SDK.

## Using EIQ Loader:

- Apply base loads and transactional updates of IHS US and International E&P data to master stores and project databases
- Transform the data into a set of common reference codes to enable global queries
- Output the data to PPDM and the OpenSpirit supported data stores (OpenWorks, GeoFrame, KINGDOM, Petra, Finder, and Recall)
- Schedule jobs to run automatically or interactively based upon OpenSpirit GIS selection events

EIQ Loader enables you to extract more value from your data subscription



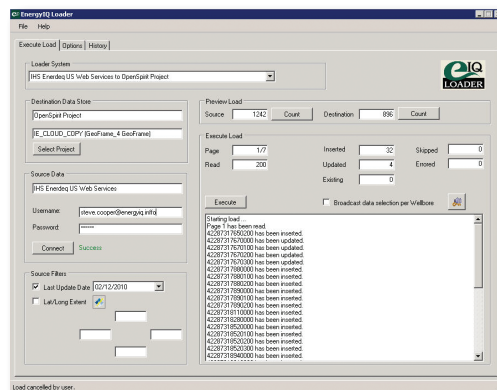
**EnergyIQ bridges the gap between Business and Technology**



# EIQ Loader enables you to derive more value from your IHS data subscription

Load only the data that you need based upon:

- Geographic Area
- Data Type
  - » Header
  - » Interpretations
  - » Cores
  - » Logs
  - » Tests and Pressures
  - » Directional Surveys...
- Date



Control how the load is processed via flexible configuration parameters:

- Add new wells?
- Update existing wells?
- Update newer wells?
- Create missing reference codes?....

Control how reference codes are mapped and reconciled:

- US well status code split into multiple facets
- US and International codes reconciled to common format
- Mappings stored in database for easy modification

Broadcast load events to OpenSpirit enabled applications

Origin	UWI	Common	Bore Status	DataSource	Completo...	Flow Direc...	Fluid Type	Show Type	Spud Date	Last Modif...	TD	TD Unit
	100000115628		abandoned	IHS Energy	1979-06-15 ...	UNKNOW	none	UNKNOW	1977-07-01 ...	2009-11-04 ...		Rt
	100000500022		suspended	IHS Energy	2004-07-27 ...	UNKNOW	crude oil	UNKNOW	2004-01-24 ...	2009-11-04 ...		Rt
	100000539667		active	IHS Energy	2005-08-15 ...	UNKNOW	UNKNOW	UNKNOW	2005-05-24 ...	2009-11-04 ...		Rt
	100000654893		active	IHS Energy	2009-07-25 ...	UNKNOW	natural gas	UNKNOW	2009-02-08 ...	2009-11-04 ...		Rt
	100000665418		active	IHS Energy	2009-07-25 ...	UNKNOW	natural gas	UNKNOW	2009-05-05 ...	2009-11-04 ...		Rt
	100000665419		active	IHS Energy	2009-07-25 ...	UNKNOW	natural gas	UNKNOW	2009-06-10 ...	2009-11-04 ...		Rt
	100000665420		active	IHS Energy	2009-07-25 ...	UNKNOW	natural gas	UNKNOW	2009-06-02 ...	2009-11-04 ...		Rt
	100000665421		active	IHS Energy	2009-07-25 ...	UNKNOW	natural gas	UNKNOW	2009-06-06 ...	2009-11-04 ...		Rt
	100000665422		active	IHS Energy	2009-07-25 ...	UNKNOW	natural gas	UNKNOW	2009-05-25 ...	2009-11-04 ...		Rt
	100000665423		active	IHS Energy	2009-07-25 ...	UNKNOW	natural gas	UNKNOW	2009-06-07 ...	2009-11-04 ...		Rt
	100000665426		active	IHS Energy	2009-07-25 ...	UNKNOW	natural gas	UNKNOW	2009-06-02 ...	2009-11-04 ...		Rt
	100000665427		active	IHS Energy	2009-07-25 ...	UNKNOW	natural gas	UNKNOW	2009-05-28 ...	2009-11-04 ...		Rt
	100000665449		active	IHS Energy	2009-07-25 ...	UNKNOW	natural gas	UNKNOW	2009-05-21 ...	2009-11-04 ...		Rt
	100000667021		active	IHS Energy	2009-07-25 ...	UNKNOW	natural gas	UNKNOW	2009-07-05 ...	2009-11-04 ...		Rt
	100000667022		active	IHS Energy	2009-07-25 ...	UNKNOW	natural gas	UNKNOW	2009-02-24 ...	2009-11-04 ...		Rt
	100000667024		active	IHS Energy	2009-07-25 ...	UNKNOW	natural gas	UNKNOW	2009-07-03 ...	2009-11-04 ...		Rt
	100000667025		active	IHS Energy	2009-07-25 ...	UNKNOW	natural gas	UNKNOW	2009-06-22 ...	2009-11-04 ...		Rt

We provide the tools and expertise necessary to design and build trusted master data stores

